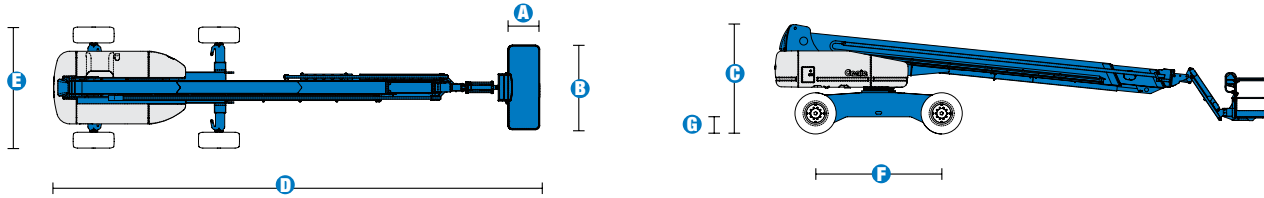


Specifications



MODEL S™-125

MEASUREMENTS	Metric	US
Working height maximum*	40.15 m	131 ft 2 in
Platform height maximum	38.15 m	125 ft 2 in
Horizontal reach maximum	24.38 m	80 ft
Below ground reach	3.27 m	10 ft 9 in
A Platform length	0.91 m	3 ft
B Platform width	2.44 m	8 ft
C Height - stowed	3.07 m	10 ft 1 in
D Length - stowed	14.25 m	46 ft 9 in
Length - transport (jib tucked under)	12.17 m	39 ft 11 in
E Width - axles retracted	2.49 m	8 ft 2 in
Width - axles extended	3.35 m	11 ft
F Wheelbase	3.66 m	12 ft
G Ground clearance - centre	0.44 m	1 ft 5.5 in

PRODUCTIVITY

Lift capacity	227 kg	500 lbs
Platform rotation	160°	160°
Vertical jib rotation	135°	135°
Turntable rotation	360° continuous	
Turntable tailswing - axle retracted	1.68 m	5 ft 6 in
Turntable tailswing - axle extended	1.24 m	4 ft 1 in
Drive speed - stowed	4.8 km/h	3.0 mph
Drive speed - raised/extended below 80 ft	1.1 km/h	0.68 mph
Drive speed - raised/extended above 80 ft	0.55 km/h	0.34 mph
Gradeability - stowed**	40%	40%
Turning radius - axle retracted: inside	4.01 m	13 ft 2 in
outside	6.75 m	22 ft 2 in
Turning radius - axle extended: inside	2.59 m	8 ft 6 in
outside	5.74 m	18 ft 10 in
Controls	12V DC proportional	
Tyres - RT lug - Foam filled	445/65 D22.5	

POWER

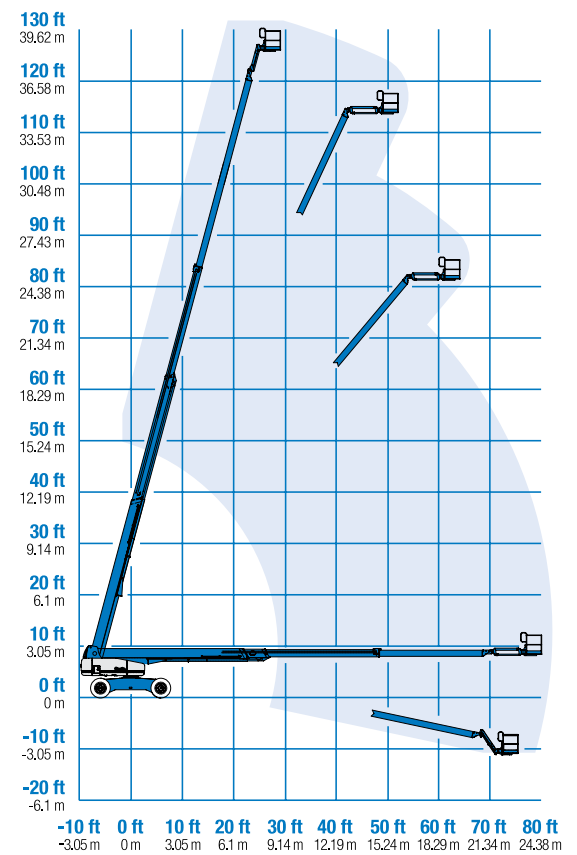
Power source	Deutz TD 2011 L04i 4-cylinder turbo diesel 55 kW (74 hp)	
Auxiliary power unit	12V DC	12V DC
Hydraulic tank capacity	208L	55 gal
Fuel tank capacity	151 L	40 gal

WEIGHT***

	20,739 kg	45,721 lbs
--	-----------	------------

STANDARDS COMPLIANCE ANSI A92.5, CSA B354.4, CE Compliance, AS 1418.10

RANGE OF MOTION S™-125



* The metric equivalent of working height adds 2 m to platform height. U.S. adds 6 ft to platform height.
 ** Gradeability applies to driving on slopes. See operator's manual for details regarding slope ratings.
 *** Weight will vary depending on options and/or country standards.

Features

STANDARD FEATURES

MEASUREMENTS

S™-125

- 40.15 m (131 ft 2 in) working height
- 24.38 m (80 ft) horizontal reach
- 227 kg (500 lbs) lift capacity

PRODUCTIVITY

- 2.44 m (8 ft) steel platform
- 1.52 m (5 ft) jib boom with 135° working range
- 4WD
- 4WS
- Extendable axles
- Rough terrain foam-filled tyres
- Self-leveling platform
- Hydraulic platform rotation
- Fully proportional Hall effect joystick controls
- Hydraulic oil cooler
- Drive enable
- Horn
- Hour meter
- Tilt alarm
- Descent alarm
- Motion alarm
- 360° continuous turntable rotation
- Locking turntable covers
- Positive traction drive
- Two speed wheel motors
- Configurable controls to limit maximum height to 24.38 m (80 ft) or 30.48 m (100 ft)
- Ground control box cover
- Engine status display
- Thumb rocker steer
- Dual flashing beacons

POWER

- 12 V DC auxiliary power
- Deutz turbo diesel 55 kW (74 hp)
- Anti-restart engine protection
- Auto engine fault shutdown

OPTIONS & ACCESSORIES

PRODUCTIVITY

- Platform swing gate
- Half mesh platform inserts with swing gate
- Platform top auxiliary rail
- Air line to platform
- Fire resistant hydraulic oil
- Biodegradable hydraulic oil
- Basic hostile environment kit
- Deluxe hostile environment kit
- Deluxe aircraft protection package (6 ft platform only)
- Tool tray
- Fluorescent tube caddy
- Platform work lights
- Front driving lights
- Lockable platform control box covers
- 1.83 m (6 ft) steel platform

POWER OPTIONS

- 240 V power to platform
- 7 kVA hydraulic generator (240 V/50 Hz)
- Cold Weather Packages
- Diesel scrubber/spark arrestor muffler
- Retained key selector switch



Genie Australia – Toll free number 1800 788 633

Brisbane (Head Office)
33 Kimberley Street
Darra QLD 4076

Sydney
74 Glendenning Road
Glendenning NSW 2761

Melbourne
374 Hammond Road
Dandenong VIC 3175

Perth
126 Sheffield Road
Welshpool WA 6106

Genie United States Distributed by:

18340 NE 76th Street
P.O. Box 97030
Redmond, Washington
98073-9730

Effective Date: April 2012. Product specifications and prices are subject to change without notice or obligation. The photographs and/or drawings in this document are for illustrative purposes only. Refer to the appropriate Operators' Manual for instructions on the proper use of this equipment. Failure to follow the Operators Manual when using our equipment or to otherwise act irresponsibly may result in serious injury or death. The only warranty applicable to our equipment is the standard written warranty applicable to the particular product and sale and we make no other warranty, express or implied. Products and services listed may be trademarks, service marks, or trade names of Terex Corporation, Terex South Dakota, Inc., and/or their subsidiaries in the USA and other countries. All rights reserved. Terex is a registered trademark of Terex Corporation in the USA and many other countries. Genie is a registered trademark of Terex South Dakota, Inc. in the USA and many other countries. ©2009 Terex Corporation.